

January 2021



Little Sutton English Hub

Introduction and Overview

In 2018 the Department for Education appointed 34 English Hubs to support schools to deliver 3 key priorities:

- **excellent teaching in age-appropriate Systematic Synthetic Phonics (SSP);**
- **early language development; and**
- **promote a love of reading.**

The English Hub model is similar to the Maths Hubs with each Hub covering a designated geographical area. Little Sutton English Hub is based in Little Sutton Primary School in Sutton Coldfield and covers:

Birmingham, Lichfield, Stafford, East Staffordshire, Staffordshire Moorlands, Stoke-on-Trent, North Warwickshire, Tamworth, Nuneaton and Bedworth, Solihull, Coventry and Rugby

Delivery of Support to Schools

All Hub Support is currently continuing and will be delivered remotely due to Covid restrictions. The Hubs deliver support to schools at three levels – **light touch, medium and intensive support.**

Engagement and Light Touch Support

The initial engagement of schools is through a **Showcase** event. Headteachers and Phonics Leaders from all schools are welcome to attend a Showcase to explore best practice in the teaching of systematic synthetic phonics and early reading and hear about the whole support offer available from the English Hub programme. There is no charge for the event and following attendance schools will have access to a range of training and opportunities. During the event, Leaders reflect on their own schools' practice by completing a **self-assessment.**

Funded by



Department
for Education

Contact Us

Email

englishhub@littlesu.bham.sch.uk

Phone

0121 464 4494

Address

Little Sutton Primary School
Worcester Lane
Sutton Coldfield
Birmingham
B75 5NL

Follow us on twitter:
@lenglishhub

Website:

<http://www.lenglishhub.org.uk/>

VIRTUAL SHOWCASE DATES

- 25th February 2021
- 16th March 2021

**Book your place on Eventbrite
via the English Hub website**

[Events - Little Sutton English Hub
\(lenglishhub.org.uk\)](https://www.eventbrite.com/e/events-little-sutton-english-hub-tickets-14988888888)

All Little Sutton English Hub Support is currently being delivered remotely

English Hub Medium Level Support

Following attendance at a showcase the medium level support that the Hub can offer includes:

- Helping schools to develop an **action plan** for improving teaching of early language and reading
- Undertaking detailed in-school **audits**. These provide an opportunity for the Hub to spend time in a school and work closely with the Headteacher and staff to fully understand current practice and identify areas for development
- **Financial support** to buy resources and training identified in self assessment/audit
- **Training** delivered by experts to support the aims of the Hub
- Regular information and **guidance** on the DfE latest thinking in phonics and reading

Remote Learning Offer and Covid 19 Recovery

When considering their remote learning offer schools may find it useful to visit the [Covid 19 Recovery](#) information published in September which included an **template to audit** phonics, early reading and reading for pleasure provision.

English Hub Intensive Support

Each year Hubs select partner schools to receive intensive support. The Hubs have expert practitioner **Literacy Specialists** who have received high quality training to deliver this package. The impact of this support is measured through specified Key Performance Indicators. The DfE have developed criteria for priority schools eligible for the most intensive support.

Little Sutton English Hub are currently working with **25 partner schools** offering intensive support and will be selecting a wave of new schools ready for **September 2021**.

DfE Validated Phonics Schemes

The DfE have validated the following Systematic Synthetic Phonic schemes for use in schools:

Floppy's Phonics Sounds and Letters (Oxford University Press, 2011)

Phonics International (Phonics International Ltd, 2007)

Jolly Phonics (Jolly Learning Limited)

Phonics Bug (Pearson)

Sound Discovery (Synthetic Phonics Limited)

Sounds Together (Sounds Together Limited)

Sounds-Write (Sounds-Write Limited)

Read Write Inc. (Oxford University Press)

Letters and Sounds: Principles & Practice (DfES, 2007) provided it is supplemented by closely matched, fully decodable books.

The validation process will be repeated in April 2021 and the list of validated schemes updated.

Online Phonics Lessons



Letters and Sounds Online Lessons

NEW: SPRING TERM LETTERS AND SOUNDS LESSONS FOR YR AND Y1 NOW LIVE!

Daily Letters and Sounds lessons were used by thousands of schools and parents during the first lockdown. This term three different lesson types are available – all designed and delivered by phonics experts working with the validated Letters and Sounds English Hubs. New lessons are uploaded to the YouTube channel [Letters and Sounds for Home and School](#) every weekday at 9am. Once they go live, lessons stay live so they can be viewed and re-watched at any time families choose.

There are three different lesson types: • Reception • Year 1 • Learning to Blend for children who need additional practise

We recommend accessing lessons via the Letters and Sounds website lettersandsounds.org.uk

Top Tips for Parents

Alongside the daily lessons, there are a series of short video clips on the You Tube Channel to support parents with specific aspects of teaching phonics, including:

Parent's guide to tricky words Parent's guide to pronouncing phonemes

Read, Write, Inc Online Lessons

Free RWI Phonics lessons for children on YouTube.

<https://www.ruthmiskin.com/en/>

Practise Speed Sounds Lessons, Red Words and Hold a Sentence at home.



YouTube speed sounds lesson schedule.

<https://www.youtube.com/watch?v=H9rGoXkmeyU>

All daily films will be available at 9.30am from Monday to Friday. Each film is approximately ten to fifteen minutes long and will be available on YouTube for 24 hours during school closure.

Films for parents and carers.

<https://www.ruthmiskin.com/en/find-out-more/parents/> These films show parents how to teach children to read and write with *Read Write Inc.* Phonics



Letters and Sounds

Little Sutton English Hub have worked with Wandle English Hub to develop an online training programme for Letters and Sounds for staff. This One Day Accredited Letters and Sounds training is suitable for all staff within schools working with the English Hub. It consists of five online video training modules each comprising reading materials and video presentations which are followed by questions to check for understanding. For further details and information about how to register for training contact the Little Sutton English Hub Team.



Face to face and remote training/ Development Days are now available for Read Write Inc
Contact admin@ruthmiskin.com to find out more.

WEBINARS

- HMI Ofsted Inspector Kirsty Godfrey will be delivering a webinar on **Reading Deep Dives** on 3rd February 2021. This is currently fully booked but please contact the Hub if you would like to be added to the waiting list.
- **Delivering Effective Phonics and Early Reading** webinar provides an overview of the key principles of teaching effective phonics and early reading.
- Following feedback from partner schools and Literacy Specialists, the Hub has produced a webinar on **blending** designed to support this specific aspect of developing early reading.
- **How the Brain Learns to Read** is a presentation from a French scientist on his research based on tracking the dynamics of brain activity in children as they learn to read.

Webinars are available to view on the Little Sutton English Hub Website. Contact the Hub Team if there are specific aspects of teaching and learning you would like additional information on.

Coming Soon.....

The English Hub Team are currently working on producing resources and webinars to support schools develop remote learning practices and maximise the impact of remote learning on phonics and early reading.

E BOOKS

Many of the publishers now have a range of ebooks on their website for schools and families to access during lockdown.

10 top tips to support children to read.

[Click here](#) for advice to help primary-aged children read at home.



- Virtual author events
- Creative-writing competition
- Anthology of children's work which will be exhibited in local cultural venues
- Book donations and walk and talk trails
- Community-wide event to promote wellbeing through reading and writing

Contact the Little Sutton English Hub for further information and details on to get involved.....

[Click here for details of the National Literacy Trust Primary Conference](#)

Connecting Stories is an exciting calendar of events and activities that will be taking place in Birmingham over the next 9 months, designed to support the wellbeing of children and encourage them to read and write for pleasure.

Funded by Arts Council England, the **National Literacy Trust** will be working with schools and the wider community to engage through a range of events and activities, including:

Connecting Stories



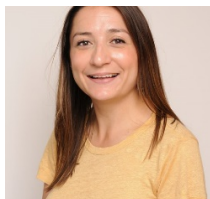
Changing life stories

Little Sutton English Hub Team

Strategic Lead Rachel Davis MBE **Hub Lead** Vicky Hewitson **Hub Co-Ordinator** Janet Conway



Literacy Specialists:



Alex Finn

Jess Faulkner

Seema Samuel

Lamorna Ross

Julie Secker